

Figure 3-4 Water Management Plans

STEP 0

Overview
of all
diversions

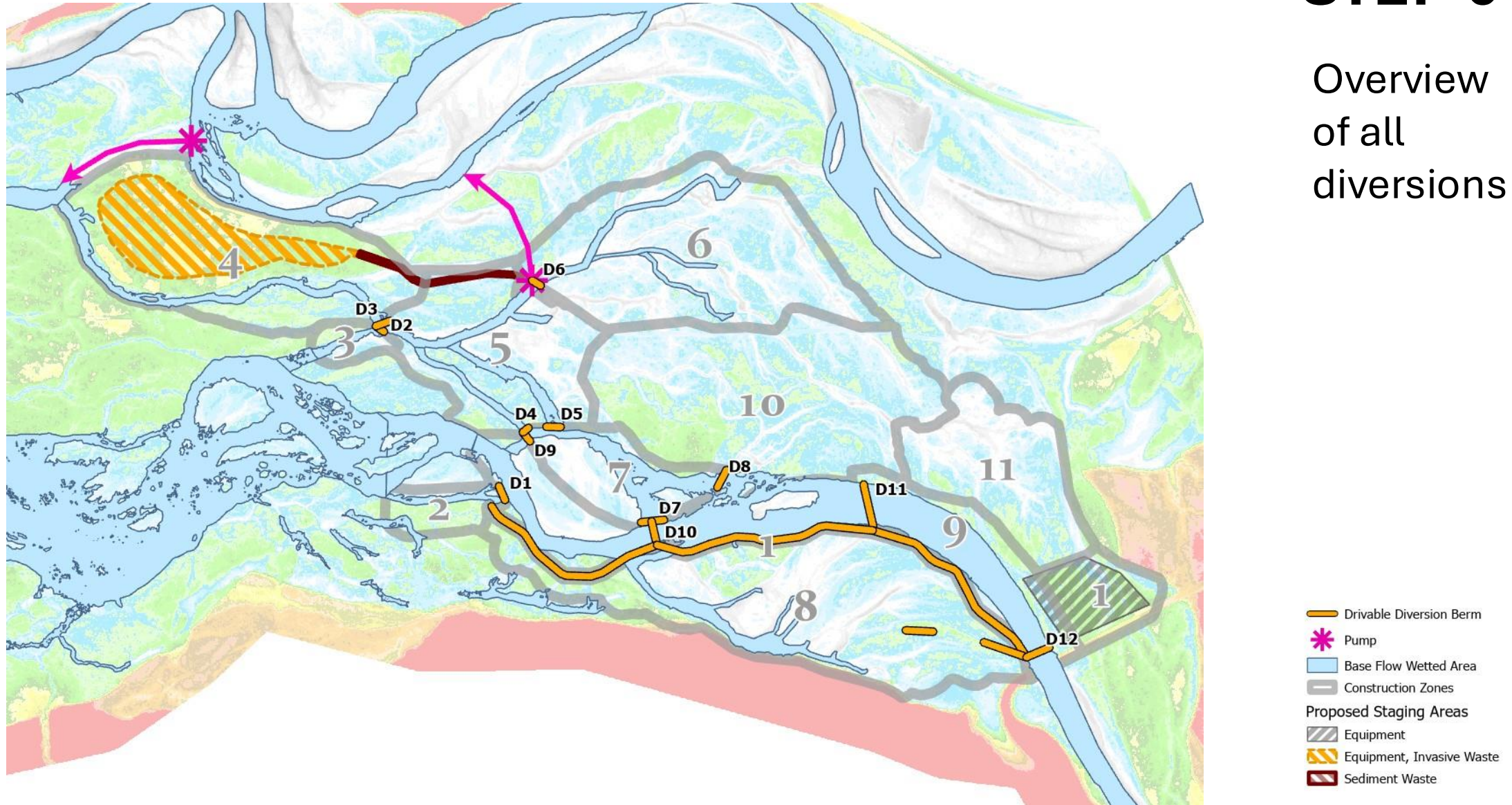


Figure 3-4 Water Management Plans

Establish Staging and Diversion Berm Road

STEP 1

- Clear southern staging area CZ 1
- Construct main diversion berm road
- Construction Zones 10, 11 available for cut and fill
- Wood placement CZ 10, 11

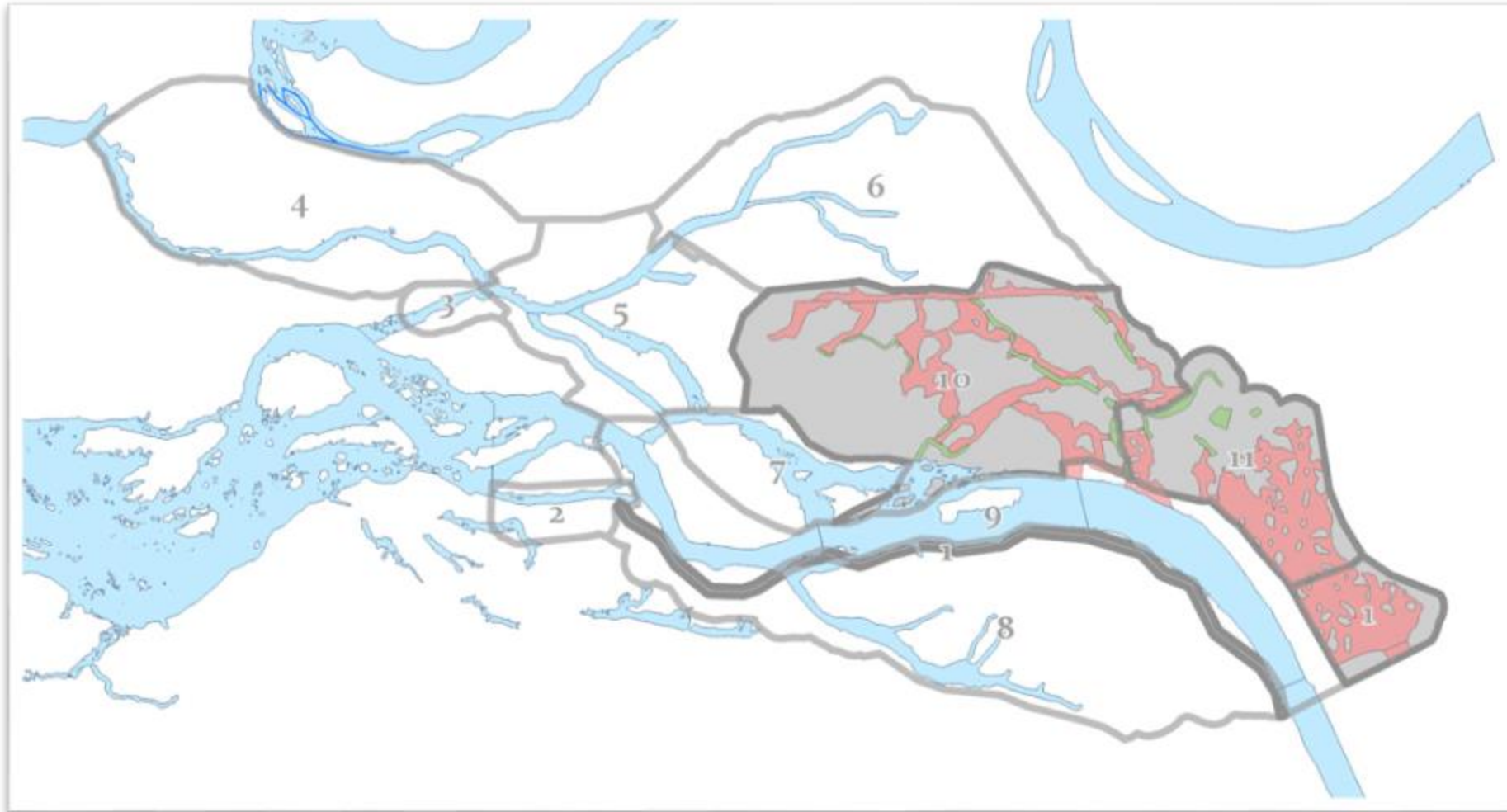


Figure 3-4 Water Management Plans

Complete CZ2

STEP 2

- Install diversion D1
- CZ 2 cut and fill available
- Wood placement CZ 2

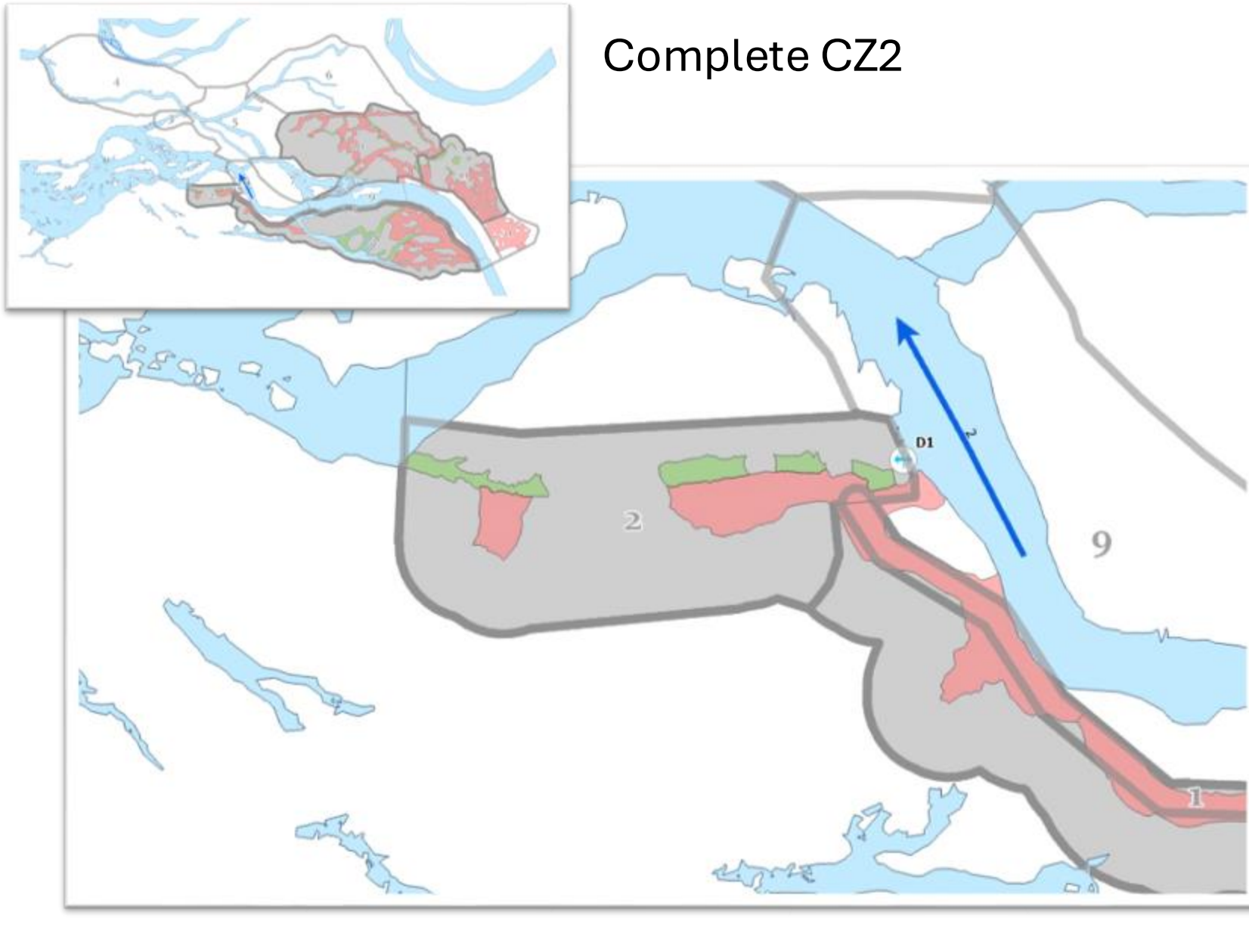
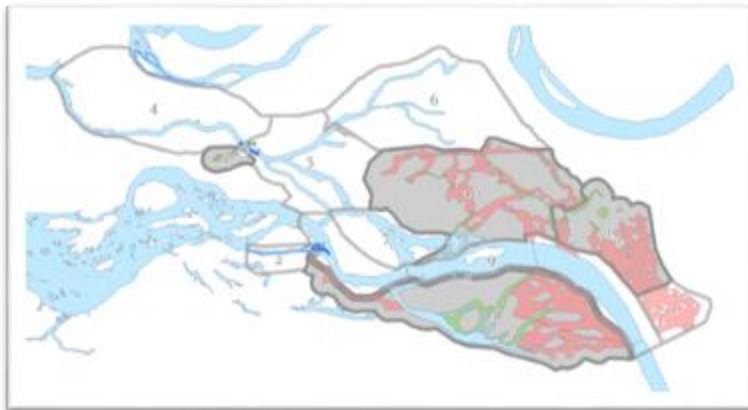


Figure 3-4 Water Management Plans



Complete CZ3

STEP 3

- Install diversion D2
- Remove diversion D1
- CZ3 cut and fill available
- Wood placement CZ3

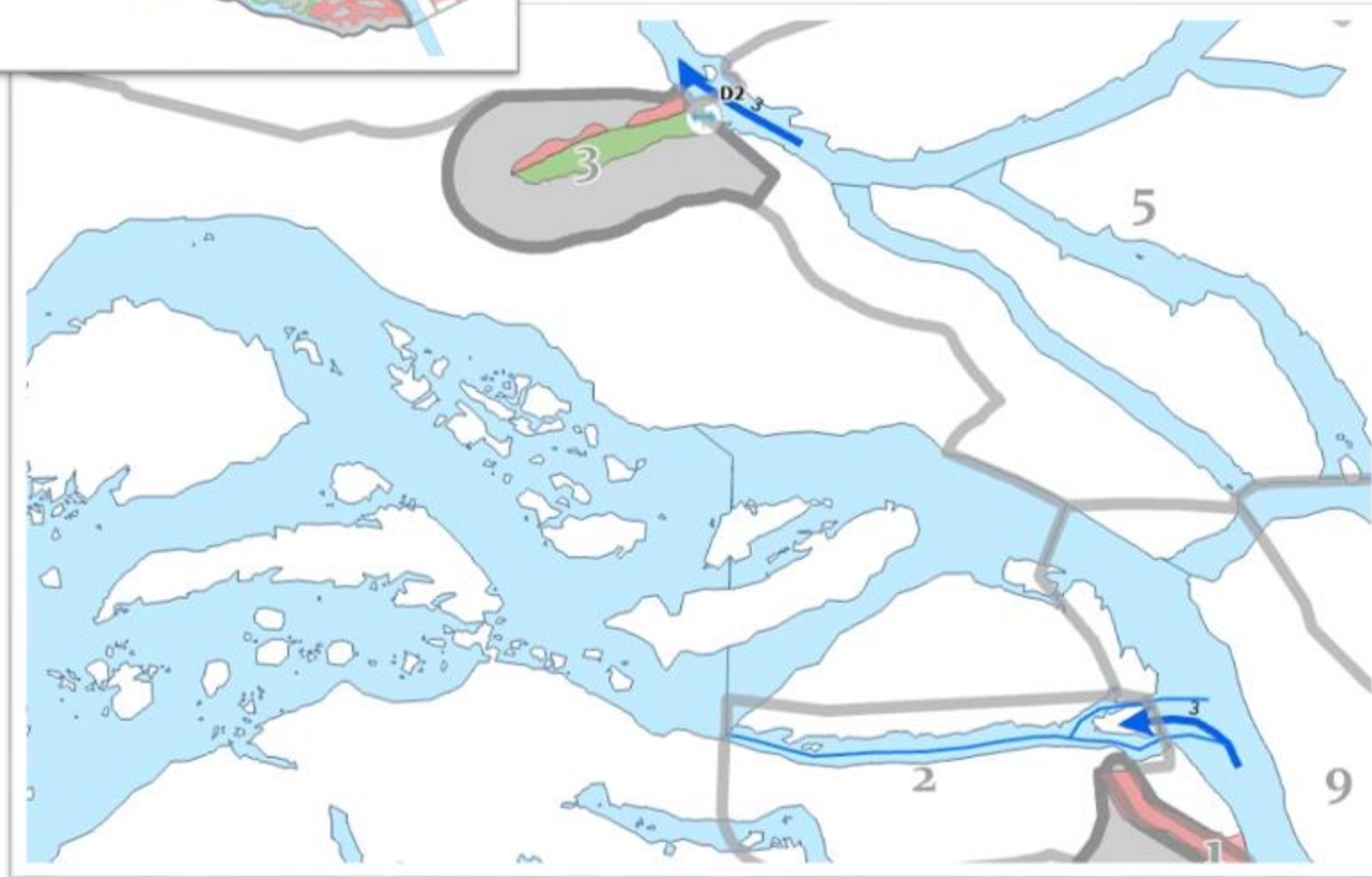
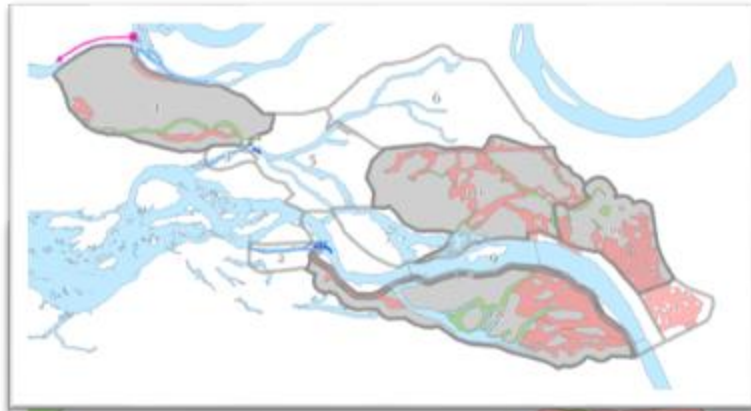
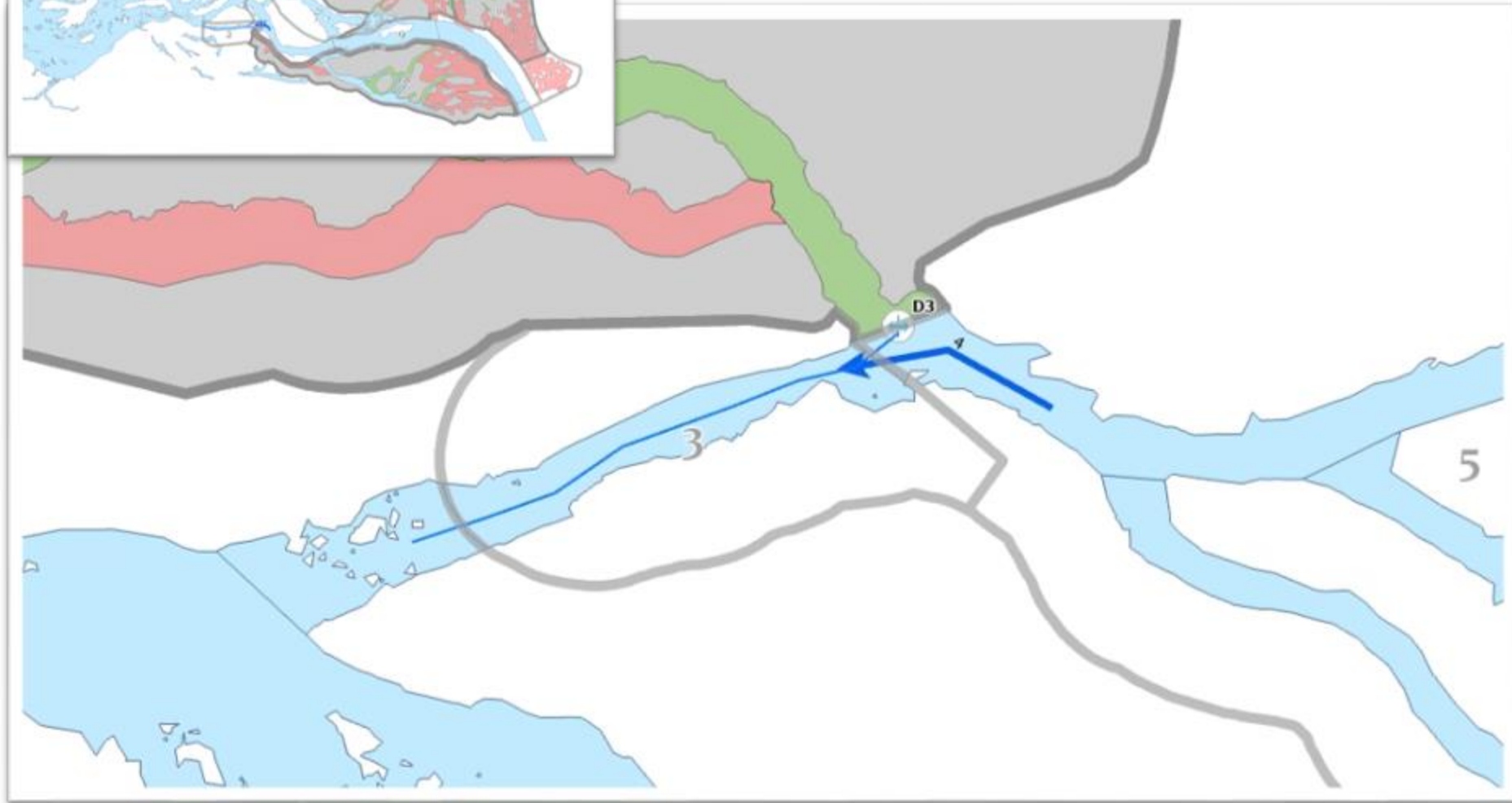


Figure 3-4 Water Management Plans



Complete CZ4

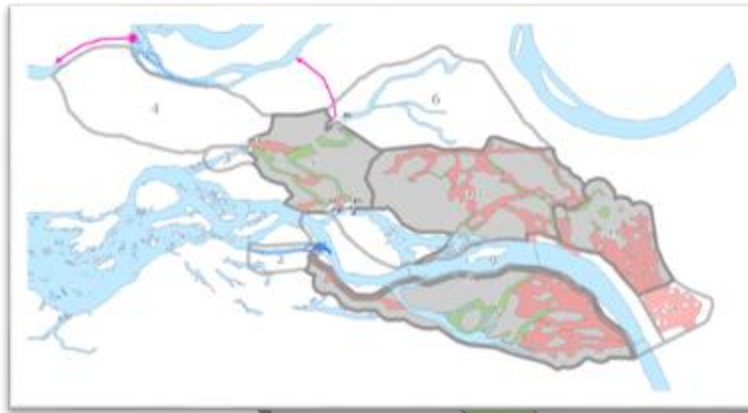


STEP 4

- Install diversion D3
- Remove diversion D2
- Install Pump P1
- CZ D4 available for cut and fill
- Wood placement CZ4



Figure 3-4 Water Management Plans



Complete CZ5

STEP 5

- Install Diversions D4, D5, D9
- CZ 5 available for cut and fill
- Wood placement CZ5

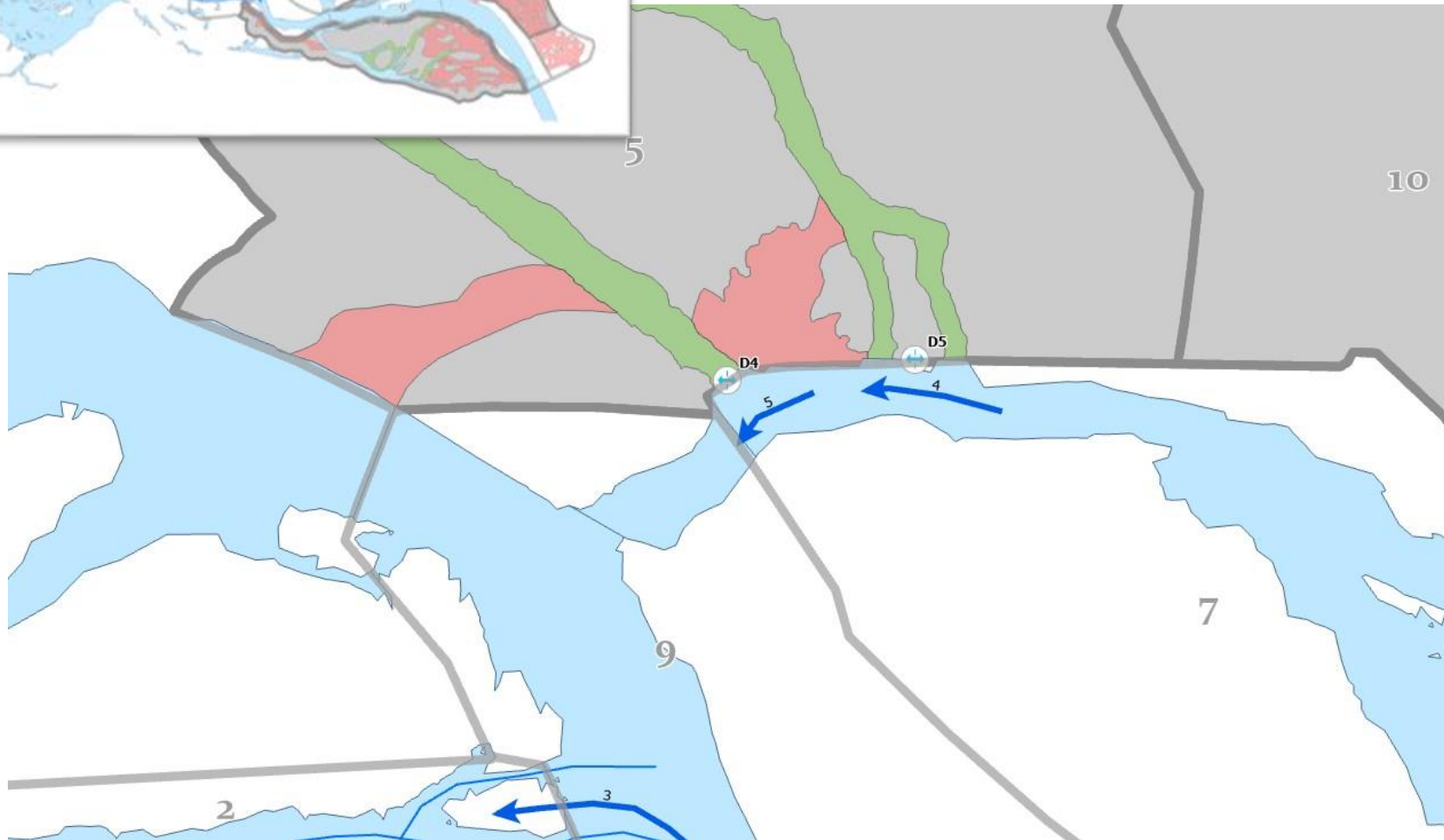


Figure 3-4 Water Management Plans

Complete CZ6, entire stream right available

STEP 6

- Install pump P2
- Install Diversion D6
- CZ6 Cut and fill
- CZ6 wood placement

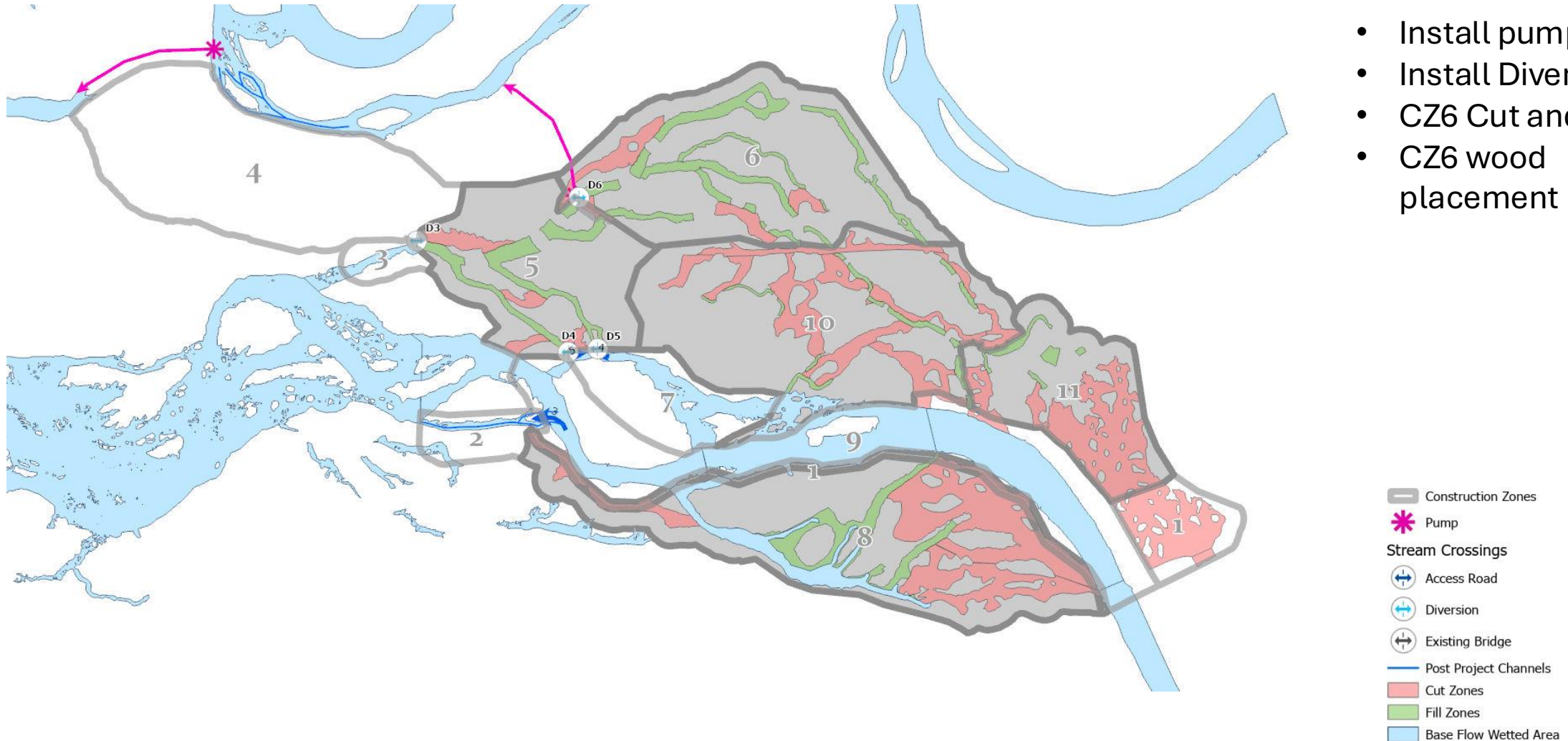


Figure 3-4 Water Management Plans

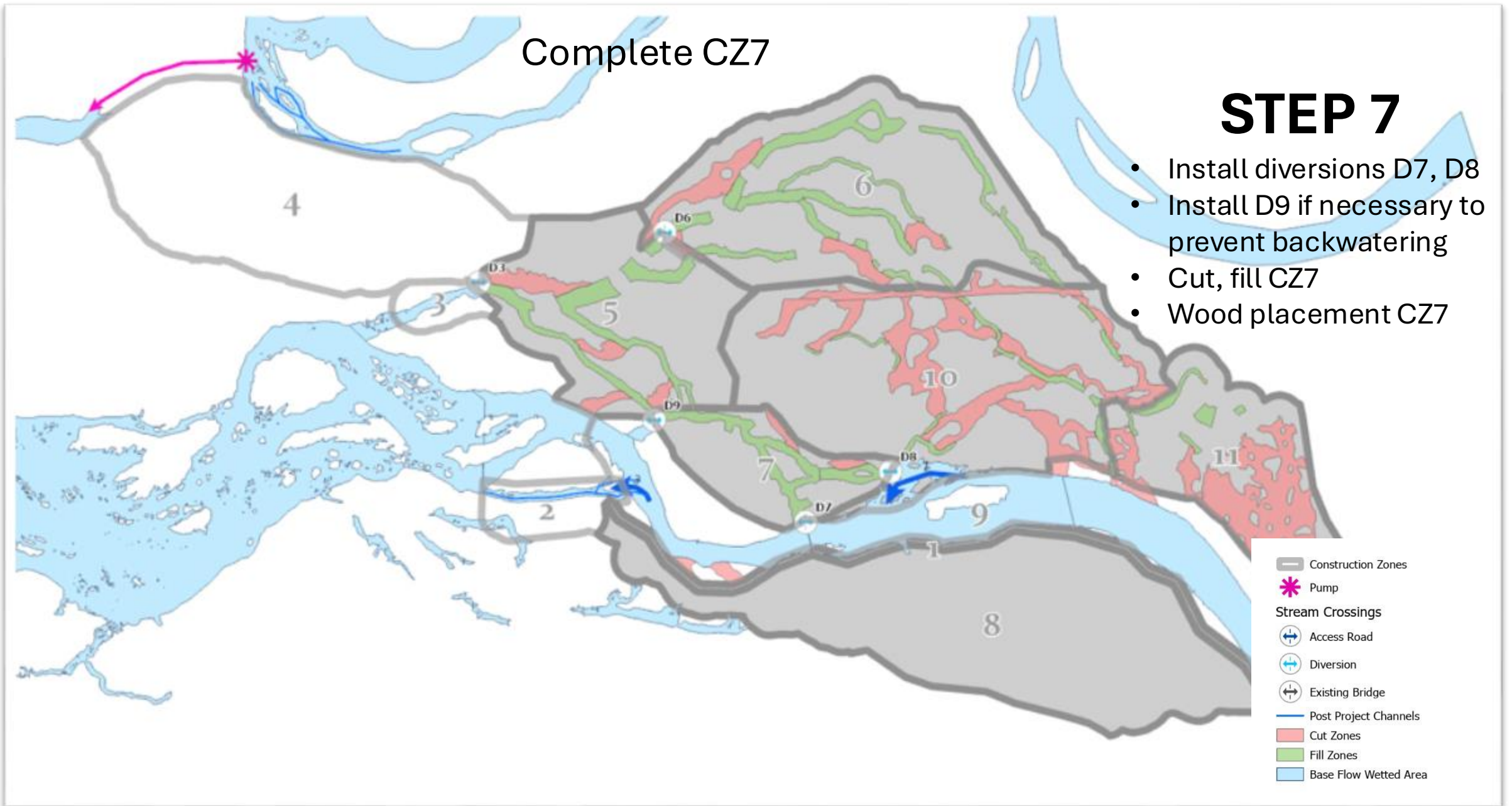


Figure 3-4 Water Management Plans

CZ 9A, lower CZ 8 complete to receive flow

STEP 8

- Install D10
- Install culvert across berm road
- Cut, fill, wood placement downstream of D10

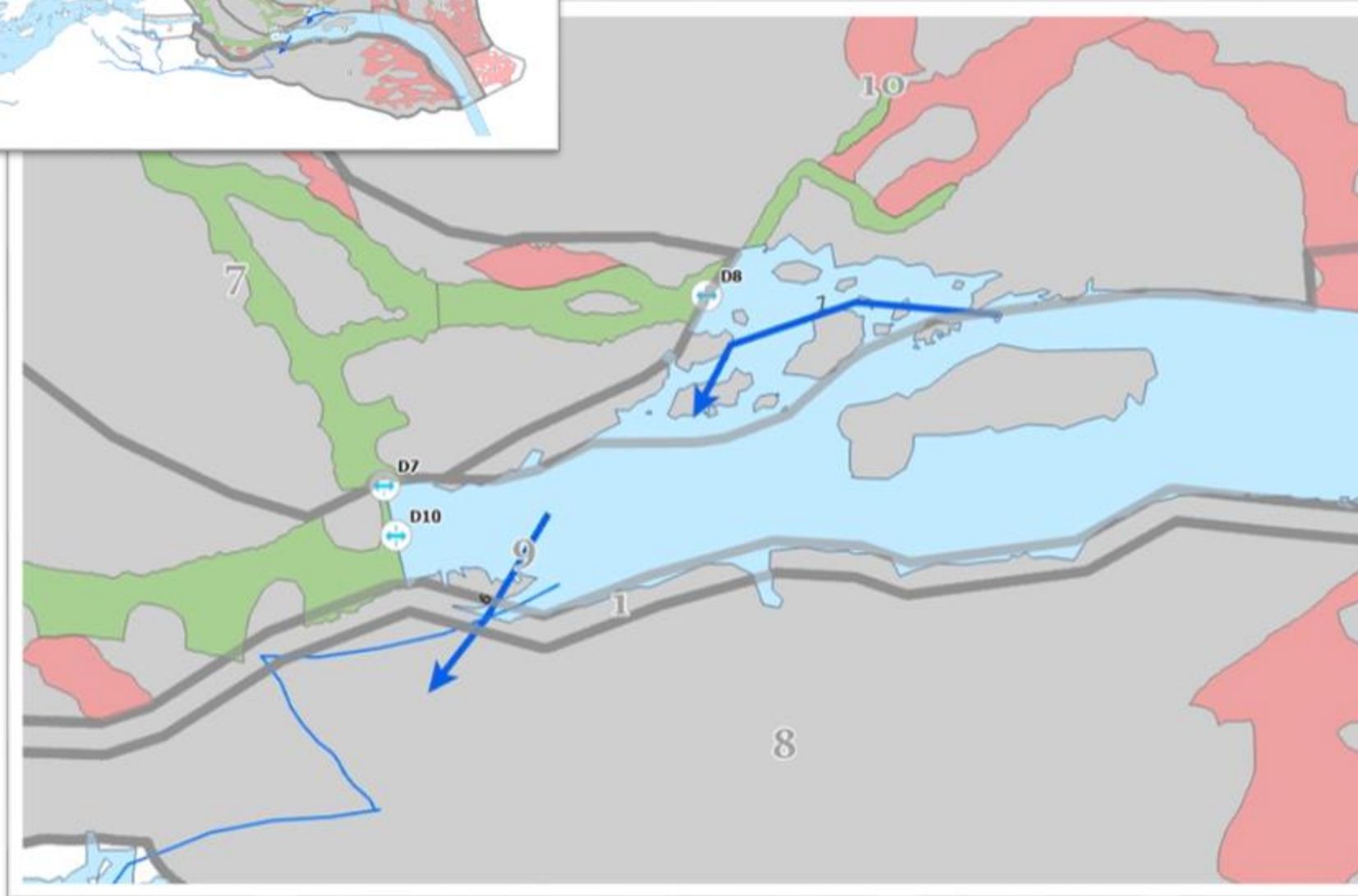
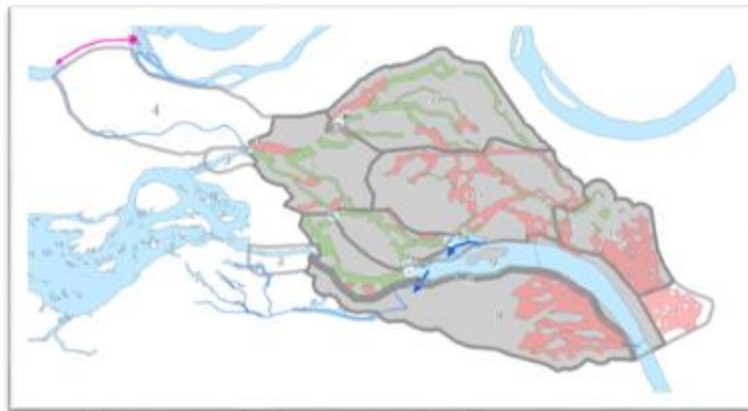
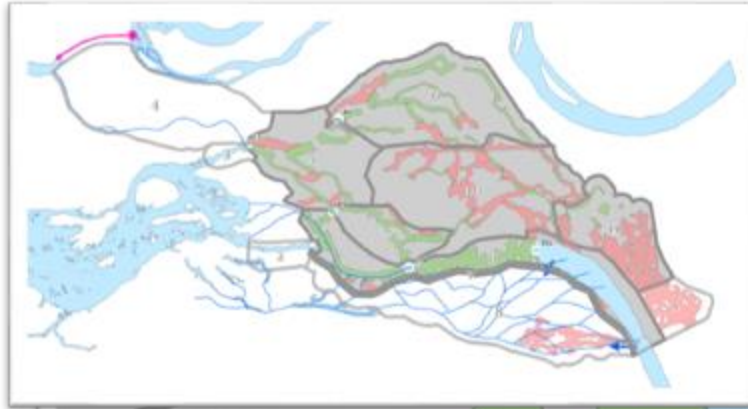


Figure 3-4 Water Management Plans



CZ 9B, mid and lower CZ 8 complete to receive flow

STEP 9

- Install D11
- Install culvert across berm road
- Cut, fill, wood placement between D10 and D11



Figure 3-4 Water Management Plans

CZ 9C, all CZ 8 complete to receive flow

STEP 10

- Install D12
- Install culvert across berm road
- Cut, fill, wood placement between D11 and D12

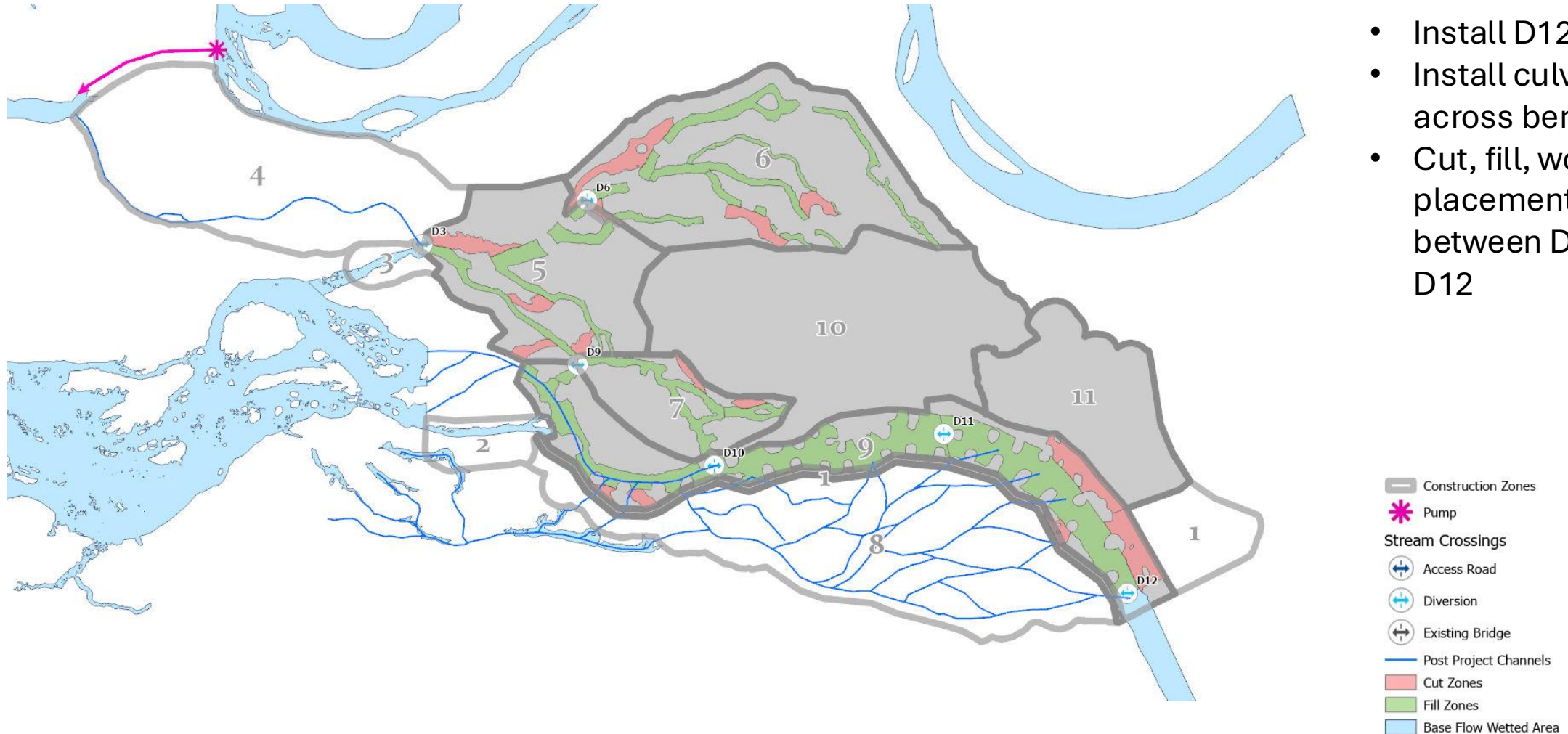


Figure 3-4 Water Management Plans

Close out complete

STEP 11

All diversions and berm road are removed, and all areas are free to flow

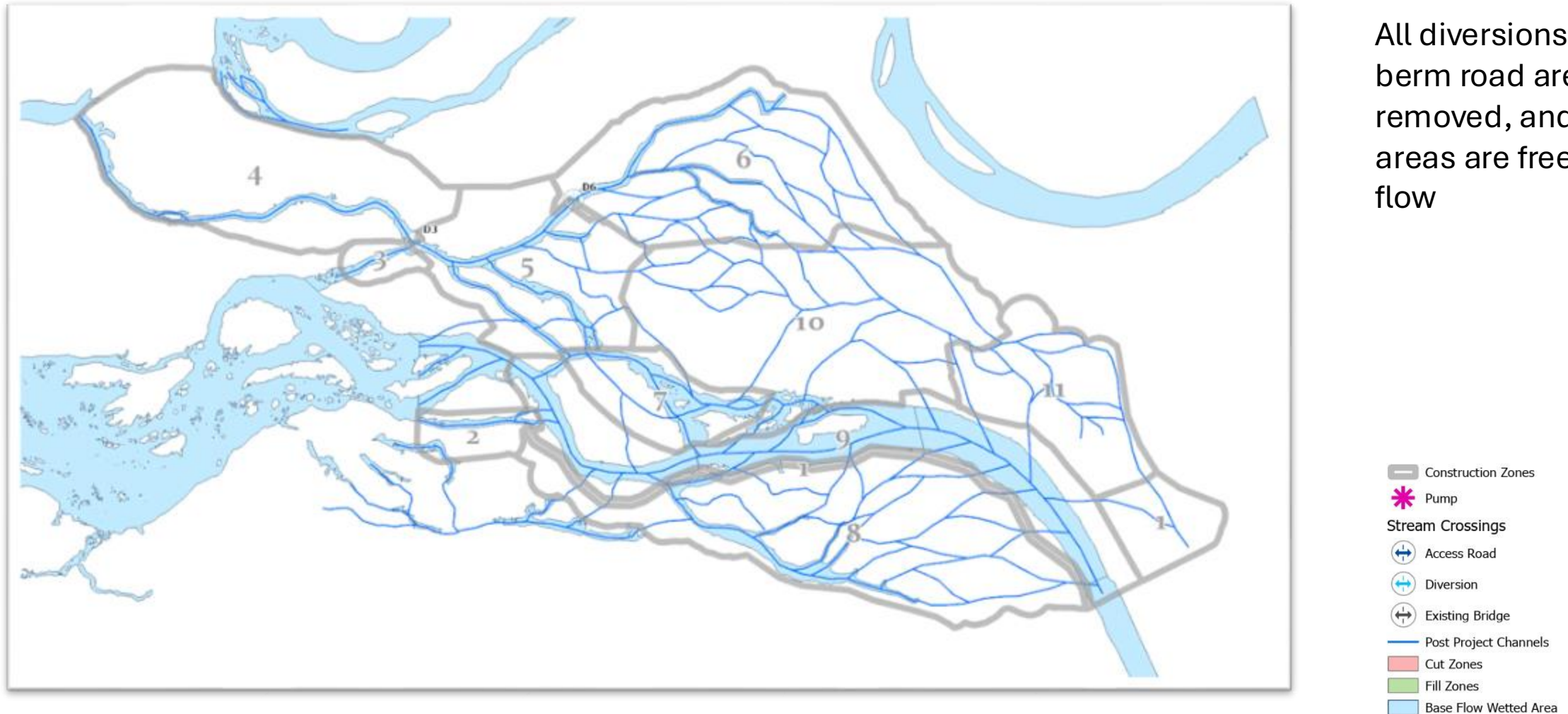


Figure 3-4 Water Management Plans